

Penitente Solar – Lighting the Way

Over the past decade, solar energy manufacturers and developers have made significant strides in the quality and affordability of this electric generation resource. The per-kilowatt-hour price from solar generators in the past five years has dropped almost 30 percent making this renewable resource competitive with traditional generation. Of course, generation resources like solar and wind are not dispatchable like coal, natural gas and hydro generation. Storage technologies have made improvements but still need quantum leaps in capacity and cost in order to make non-dispatchable resources a viable option for baseload generation.

For the past four years, your electric cooperative has been investigating the installation of a 2.75 AC megawatt solar project. Finding the right location and the right project management company has taken some time. In addition, ensuring that the project is cost effective has also been a top priority. While we have reported on this in the past, we can now say this project is a go. Last summer, REC negotiated a power purchase agreement with RES-Americas, which provided very attractive pricing that will provide modest power supply cost reductions. In addition to the savings on wholesale electric costs, this project will provide renewable energy credits from a project here in the San Luis Valley.

The project has been named Penitente Solar and will be located in southwest part of Saguache County. REC purchased the 25 acres of land on which the project will be constructed and all the agreements necessary to build this project have been executed. Construction is scheduled to begin in early spring this year and should be complete by midsummer. RES-Americas has sold the equity and power purchase agreement to AEP-Onsite, but RES-Americas will construct and operate the project.

THIS ISSUE

Penitente Solar

Company News

Loren Howard

Conservation Corner

Recipes

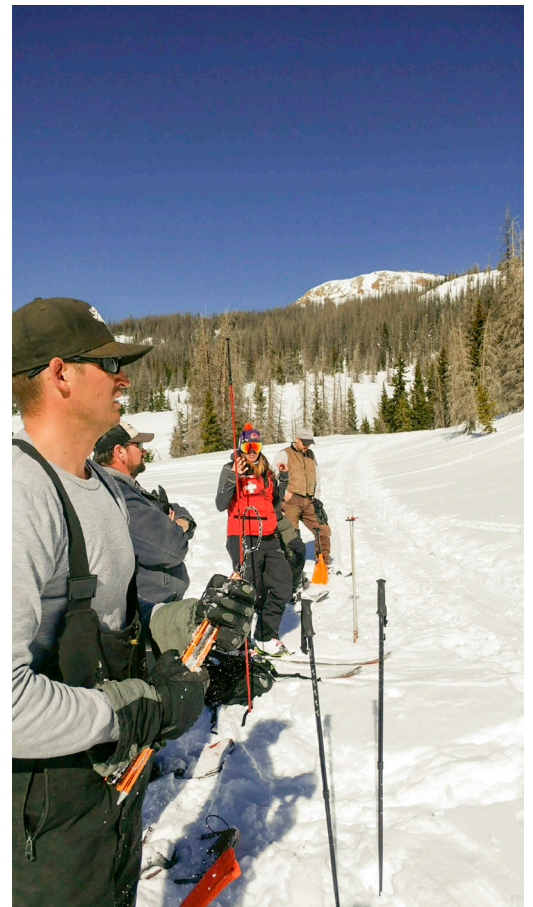
MARCH 2017 | VOLUME 42 | ISSUE 3

Company News



Safety is always paramount with the crews of REC. With all the snow in the mountains surrounding the San Luis Valley this year, winter safety becomes even more important. High snow levels and temperature fluctuations cause instability in the layers of snow and create potential avalanche danger.

Given the possibility of high avalanche danger in the mountains, REC crews took to the snow to get additional training in avalanche safety. The line crews participated in a daylong excursion that provided training on best practices for avalanche conditions and rescue. The training was led by Davey Pitcher and Eric Deitemeyer of Wolf Creek Ski Area.





LOREN HOWARD

Lineworker Appreciation

Every year, we take the time to thank our extraordinary lineworkers who dedicate their lives to keeping the lights on in our local communities. REC lineworkers maintain 2,440 miles of line in San Luis Valley REC's service territory, and without them, our world would be dark.

We depend on our entire staff to keep REC running smoothly, but on April 10, 2017, we honor all lineworkers, who often find themselves in dangerous and challenging situations, so our lives might be a little brighter and safer every day. These brave men and women repair damaged lines and maintain critical infrastructure for our communities. Without their hard work and commitment to the job, our co-op would not thrive. No matter the time — day or night, weekday or weekend — if the lights go out, so do they.

Perhaps you have seen them raising their bucket trucks in howling winds and torrential rains, or in freezing, icy conditions. They work around the clock near high-voltage power lines until electricity is restored to every member in our co-op community.

In addition to aiding members in our local service territory, lineworkers are always willing and eager to volunteer when a neighboring community, county or state is in need after a major outage occurs.

Our lineworkers are brave, committed and critical to our success. We hope you will join us in thanking the many lineworkers — both locally and around the world — who light our lives. Remember, your power works because they do! Use #ThankALineman on social media to show your support.



BOARD OF DIRECTORS

Cole Wakasugi, President
719-379-2629

Carol Lee Dugan, Vice President
719-852-5412

Scott Wolfe, Secretary
719-852-0966

Mike Rierson
719-754-2588

Rick Inman
719-658-2455

Eleanor Valdez
719-274-5680

Keenan Anderson
719-992-1857

Email: power@slvrec.com

Your email will be forwarded based on the direction you provide in your subject line.

CEO

Loren Howard
719-852-6630

SLVREC Office (toll free)
800-332-7634

SLVREC Office (local calls)
719-852-3538

PUBLISHER'S STATEMENT

The Newsboy (publication #551-450) is an official publication of the San Luis Valley Rural Electric Cooperative, Inc.; 3625 US Hwy 160 W, Monte Vista, CO 81144. The Newsboy is published monthly for SLVREC's members. Periodical postage paid at Monte Vista, CO 81144. Subscription price \$20/year.

Postmaster, send Form 3579 to NEWSBOY, P.O. Box 3625, Monte Vista, CO 81144-3625.

© 2016 San Luis Valley Rural Electric Cooperative. All rights reserved.



www.facebook.com/SLVREC



www.twitter.com/SLVREC

The Power of Cooperatives



What makes a cooperative successful? If you ask the employees of REC, they will tell you, “people”. The people who are our members, the people who are our employees, and the communities we provide power to.

Recently, all employees of REC participated in the Power of Cooperatives class led by Adam Schwartz. The class provided a fascinating historical perspective about co-ops and the cooperative way. It explored the meaning behind the seven cooperative principles and why co-ops are so important in rural areas.

As a cooperative, we value our members and their interactions with us. We are always looking for ways to improve the lives of the membership and add economic value to the San Luis Valley.

So, if you ever have an idea or a question, do not hesitate to reach out to us! We can be reached at 719-852-3538 or at power@slvrec.com.

Conservation Corner

Energy Efficiency Tip of the Month



Dishwasher Efficiency Tip:

Air dry clean dishes to save energy. If your dishwasher does not have an automatic air-dry switch, turn off the dishwasher after the final rinse and prop the door open slightly so the dishes will dry faster.

Source: U.S. Dept. of Energy



RECIPES OF THE MONTH



INGREDIENTS

3 1/2 cups all-purpose flour
1/4 teaspoon paprika
1/4 teaspoon cayenne pepper
1/4 teaspoon salt
10 chicken wings
Oil for deep frying
1/4 cup butter
1/4 cup hot sauce
1 dash ground black pepper
1 dash garlic powder

The Best Hot Wings

In a small bowl mix together the flour, paprika, cayenne pepper and salt. Place chicken wings in a large nonporous glass dish or bowl and sprinkle flour mixture over them until they are evenly coated. Cover dish or bowl and refrigerate for 60 to 90 minutes.

Heat oil in a deep fryer to 375 degrees F. The oil should be just enough to cover wings entirely, an inch or so deep. Combine the butter, hot sauce, pepper and garlic powder in a small saucepan over low heat. Stir together and heat until butter is melted and mixture is well blended. Remove from heat and reserve for serving.

INGREDIENTS

2 cups fresh hash brown potatoes
8 ounces cooked, diced ham
2 (10.75 ounce) cans condensed cream of potato soup
1 (16 ounce) container sour cream
2 cups shredded sharp Cheddar cheese
1 1/2 cups grated Parmesan cheese

Ham and Cheesy Hash Brown Casserole

Preheat oven to 375 degrees F. Lightly grease a 9x13-inch baking dish.

In a large bowl, mix hash browns, ham, cream of potato soup, sour cream, and Cheddar cheese. Spread evenly into prepared dish. Sprinkle with Parmesan cheese.

Bake 1 hour in the preheated oven, or until bubbly and light brown. Serve immediately.

INGREDIENTS

2 cup tequila
1 cup orange liqueur
1/2 gallon orange sherbet
2 liters ginger ale
6 ounce frozen orange juice concentrate (optional)
Orange slices for garnish

Slam Dunk Punch

Place sherbet and frozen orange juice concentrate in a punch bowl. Allow to thaw for 10 to 15 minutes.

Stir in ginger ale, tequila and orange liqueur. Garnish with orange slices and serve.

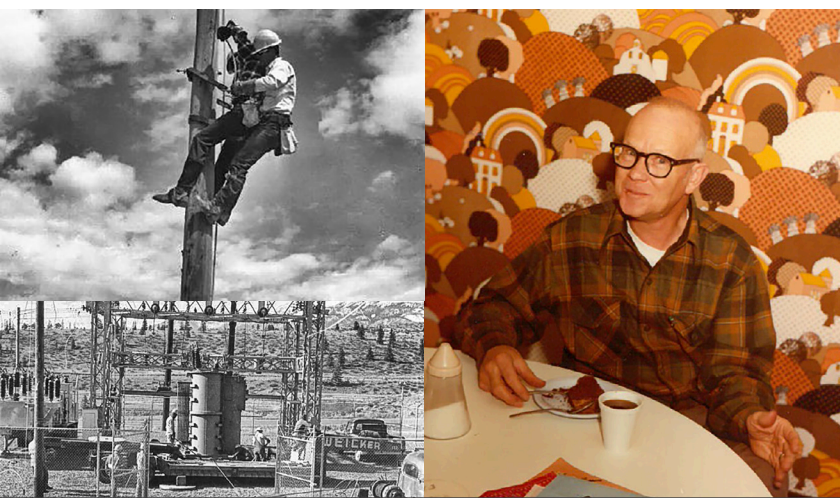


Periodical Postage
Paid at Monte Vista, CO

POWERING A VITAL VALLEY

P.O. Box 3625
Monte Vista, CO 81144

March 2017



Celebrating

80
Years

POWERING OUR COMMUNITY

SLVREC's office is open from 7 a.m. to 5 p.m.
Monday through Thursday.
The office is closed Friday through Sunday.

ENERGY ASSISTANCE

866-HEAT HELP (866-432-8435)
www.energyoutreach.org

SCHEDULED MEETINGS

Board Meeting—March 28 @ 1:00 p.m.
The Board of Directors meets the last Tuesday of each
month unless otherwise stated. Members are welcome.

This institution is an equal opportunity employer.

Your Touchstone Energy®
Cooperative

