

THE NEWSBOY

News for Members of San Luis Valley Rural Electric Cooperative

“I believe the first half of your life you spend learning who you are and the second half of your life you learn how to be your opposite.”



THIS ISSUE

Fiber Update

Meet Loren Howard

Welcome Ben Osburn

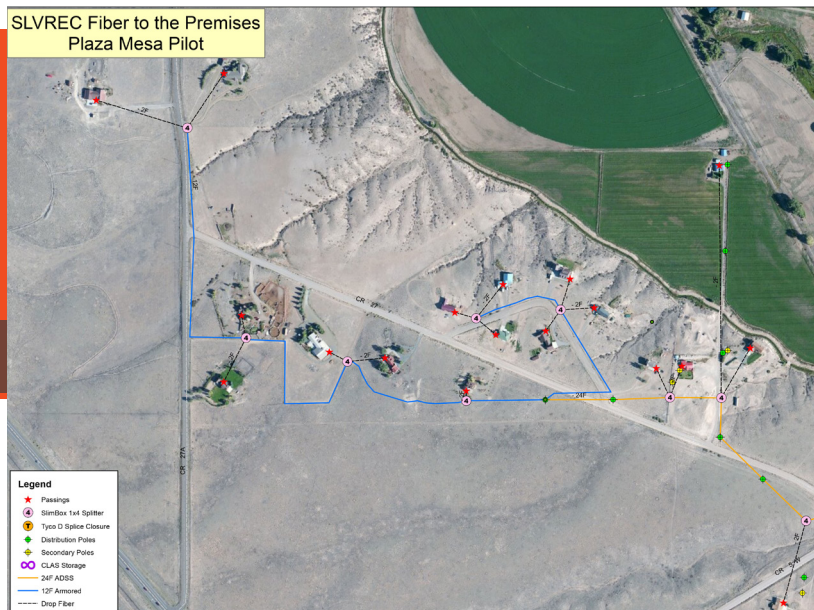
Conservation Corner

Recipes of the Month

AUGUST 2014 | VOLUME 41 | ISSUE 5



Telecom & Fiber Optics Update



Until now, the San Luis Valley has been lacking when it comes to Internet access, as residents and businesses have been forced to settle for slow and unreliable service.

Now a new option is on the horizon for the Valley and it will rival anything offered in the nation's biggest cities.

The San Luis Valley Rural Electric Cooper has a long history of providing consistent, reliable electricity, crossing rivers and mountains to ensure that residents and businesses have the service they rely on. Now, SLVREC is leveraging that spirit to deliver what other companies simply cannot – reliable connection at cutting-edge speed through a 100% fiber optic network.

The REC's service will offer consistently fast speeds – both for uploads and downloads. That state-of-the-art technology will come with good old-fashioned locally based service from a trusted nonprofit that's been reliably serving the Valley for more than 75 years. It means being there when you need us.

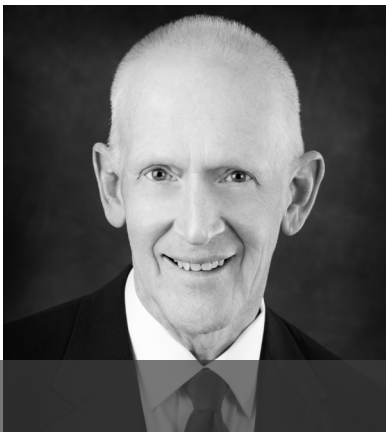
The REC's fiber network will unite us at home and to the world, becoming the fiber of our community and connecting Valley residents to a whole new world of possibilities, from streaming videos and movies without interruptions to clear phone calls and video chats. Because it's offered by the Valley's not-for-profit member-owned cooperative, it will be priced competitively.

“The REC's fiber network will unite us at home and to the world, becoming the fiber of our community and connecting Valley residents to a whole new world of possibilities.”

Some Internet providers that use old copper-wire technology promise service “up to” a certain speed when the reality often falls far short of that goal. And those speeds are just for downloading data from the Internet; uploading documents, photos or video typically is much slower.

With SLVREC's service, you'll reliably get the speeds you pay for – the same consistently whether you're uploading or downloading. And you'll be able to marry this broadband with phone service from the same local provider with headquarters in the Valley and first-class service.

San Luis Valley Rural Electric Cooperative is already hard at work deploying the fiber network. Building it out across the Valley is a massive undertaking that will take time. We are proud to announce that we will be rolling out a pilot project to the Plaza area in Fall. The project will consist of 20 homes and will help us gauge installation times and efficiency. The next project are will be South Fork followed by Creede. We will alert residents and businesses as the service becomes available in their area.



LOREN HOWARD

Meet Loren Howard

by Wendi Seger

In stunned silence, with faces filled with confusion, we waited. Waited to see if what we heard was real. Waited to see what it really meant.

“Our mission here is more than just keeping the lights on. We can help transform an entire community. We must commit to improving health-care, education, and the economy. We must commit to world class standards in all we do.”

CEO Loren Howard’s words hung boldly in the air. What did this mean for us? As the leadership team representing all the key functions of the organization, we were both inspired and fearful. Although we didn’t know how this whole transforming our community thing would happen, we were certain of two things:



First, that it **would** happen and, second, that we should get a good night’s sleep.

Under protest, Loren has relented in allowing me to tell the story of his transformative leadership and the whatever-it-takes-spirit he has brought to your cooperative and your community.

If you sit down with Loren, you will quickly learn that he lives his life with an *anything is possible* and *never quit* mentality. If you attended the annual meeting this year, you would never suspect that Loren’s personality profile clearly states he should not be good at public speaking or mingling with crowds. Like every other area in life, Loren has taken it as a challenge, a call to action.

Loren states, “I believe the first half of your life

you spend learning who you are and the second half of your life you learn how to be your opposite. The challenge of continually learning and being better inspires me. I don’t know how to be any different.”

Although he would tell you that he doesn’t know where this character trait comes from, he does share there were several transformative life experiences that were significant factors.

At the impressionable age of 16, Loren spent a summer with Outward Bound in Colorado. It was here that he learned the depth of his character and range of abilities. He explains that the motto of Outward Bound is “To Serve, To Strive and Not To Yield”. Through overcoming being “frozen in fear” on a cliff face or surviving solo expeditions, he faced danger and peril that impacted him forever.

“From that experience, I learned how not to quit. I can never recall being frozen in fear again like that in my life.”

The never quit spirit he learned through Outward Bound was reinforced through his military training and even later on when he worked at a paper mill in Michigan. “My boss was a tyrant,” Loren states flatly. “He was universally abusive to everyone. I learned how I did not want to be as a leader.”

Loren took those life lessons with him when he began his career at the Holland Board of Public Works in Holland, Michigan in 1987. From Plant Manager, to Sales and Marketing Director, to CEO, Loren succeeded at bringing a revised organizational structure that improved the organization’s ability to focus on strategic issues versus routine operations.

In 2011, Loren accepted the position of CEO at the San Luis Valley Rural Electric Cooperative. Loren’s history of innovative vision mixed with common sense business acumen was an story continued on pg. 5

BOARD OF DIRECTORS

Scott Wolfe, President
719-852-0966

Cole Wakasugi, Vice President
719-379-2629

Ernie Ford, Secretary
719-588-0255

Carol Lee Dugan
719-852-5412

Mike Rierson
719-754-2588

Rick Inman
719-658-2455

Eleanor Valdez
719-274-5680

E-mail power@slvrec.com

Your e-mail will be forwarded based upon the direction you provide in your message.

CEO

Loren Howard
719-852-6630

SLVREC Office (toll free)
800-332-7634

SLVREC Office (local calls)
719-852-3538

STATEMENT OF PUBLISHER

The Newsboy (publication #551-450) is an official publication of the San Luis Valley Rural Electric Cooperative, Inc.; 3625 US Hwy 160 W.; Monte Vista, CO 81144. *The Newsboy* is published monthly for SLVREC’s members. Periodical postage paid at Monte Vista, CO 81144. Subscription price \$20/year.

Postmaster, send Form 3579 to NEWS-BOY, P.O. Box 3625, Monte Vista, CO 81144-3625.

© 2013 San Luis Valley Rural Electric Cooperative. All rights reserved.



www.facebook.com/SLVREC



www.twitter.com/SLVREC



COMPANY NEWS

Welcome Ben Osburn!

Ben Osburn is the newest member of the San Luis Valley Rural Electric Cooperative. Hailing from Chico, California, it seems Ben's heart has always been in Colorado. He has had a lifelong love of Broncos football, is not afraid of a little snow and is always up for snowboarding. Ben also enjoys travel, with his excursions taking him to Germany, Austria and the Czech Republic.

Ben graduated from Northwest Lineman College in March of 2014. He was eager to join SLVREC after experience the family dynamic of the organization. Osburn feels this is an excellent place to start his career and learn from the experiences of the many other linemen of SLVREC. He hopes to take experience and knowledge from this opportunity.



CONSERVATION CORNER



Enable the "sleep mode" feature on your computer, allowing it to use less power during periods of inactivity. In Windows, the power management settings are found on your control panel. Mac users, look for energy saving settings under system preferences in the apple menu.

Configure your computer to "hibernate" automatically after 30 minutes or so of inactivity. The "hibernate mode" turns the computer off in a way that doesn't require you to reload everything when you switch it back on. Allowing your computer to hibernate saves energy and is more time-efficient than shutting down and restarting

your computer from scratch. When you're done for the day, shut down.

Unplug your chargers when you're not charging. Every house is full of little plastic power supplies to charge cell phones, PDA's, digital cameras, cordless tools and other personal gadgets. Keep them unplugged until you need them.



RECIPES OF THE MONTH

INGREDIENTS

4 Chicken boneless skinless breasts
1/2 lb of thinly sliced Swiss cheese
1/2 lb of thinly sliced Havarti cheese
1/2 lb of thinly sliced ham
Salt, Pepper and Garlic Powder to season and taste

GRILLED CORDON BLEU

Pound chicken breast out slightly, season with salt, pepper and garlic powder. Butterfly chicken breast and stuff with alternating cheese and ham. Grill the stuffed chicken until the chicken is cooked to proper temperature.

INGREDIENTS

4 Large Red or Golden Beets
1-2 tsp of stone ground mustard
1-2 tsp dijon mustard
1-2 tsp honey (local)
1/4 cup of balsamic vinegar

GRILLED BEET SALAD

Clean and quarter beets. Season lightly with garlic powder and cumin. Wrap in an aluminum foil pouch and grill until medium tenderness when poked with a fork. Remove from heat, let cool for 10 minutes. In a bowl, toss with mixture of dijon mustard, stone ground mustard, honey, and balsamic vinegar. Serve on a bedding of arugula or alone.

appealing combination to the Board of Directors. Board President Scott Wolfe states, “We were looking for a CEO that could take this organization in a new direction. We wanted someone fearless and smart. We knew immediately that Loren was a leader that not only the REC needed, but our entire community.”

A warm smile works its way across his face as Loren shares his hopes for the REC and the communities of the San Luis Valley.

“I see that this organization can be the hope and inspiration for the Valley. So often there is the belief that we can only expect little because of where we live. We can change that belief. Whether it is bringing capabilities like broadband to increase the development potential in the Valley or best practice organizational processes, we stand to give people hope. When I know that I’ve done my part to

transform the lives of the employees who work at the REC and people of the San Luis Valley will I be satisfied with the work I’ve done.”

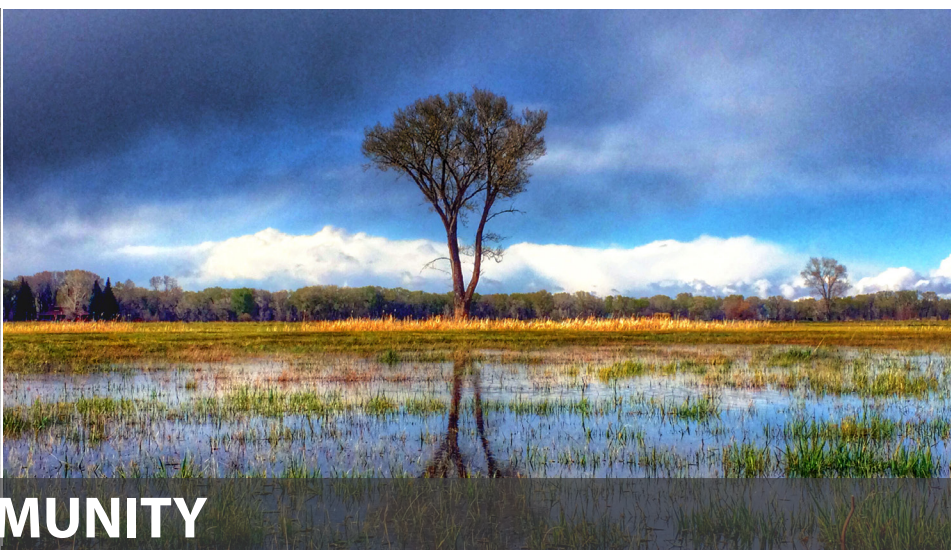
Loren’s drive and commitment is a call to the employees on a daily basis. However, he sees beyond those he works every day with to you, our members. If you choose today to do whatever it takes “To Serve, To Strive and Not to Yield,” you should immediately do two things. First, you must believe that it WILL happen. Second, you should probably get a good night’s sleep.

SAN LUIS VALLEY RURAL ELECTRIC CO-OP™

Your Touchstone Energy® Cooperative 
The power of human connections®

PO Box 3625
Monte Vista, CO 81144

Periodical Postage
Paid at Monte Vista CO



POWERING OUR COMMUNITY

SLVREC's offices are open from 7 a.m. to 5 p.m.
on Monday through Thursday.
Offices are closed Friday through Sunday.

ENERGY ASSISTANCE

866-HEAT HELP (866-432-8435)
<http://www.energyoutreach.org>

SCHEDULED MEETINGS

Board Meeting August 26, 9:30 a.m.
The Board of Directors meet the last Tuesday of each
month unless otherwise stated. Members are welcome.

*This institution is an equal opportunity provider
Thanks to Patrick Jaramillo for photographic content*

