

## Understanding the upcoming 3.5% Power Cost Adjustment

As mentioned in last month's Newsboy, the PCA is necessary to cover fluctuating wholesale power costs from our energy provider, Tri-State Generation & Transmission.

- The PCA line item has been added under Current Service Detail (showing a zero charge on October–January bills).
- The PCA charge will first appear on February 2026 bills, reflecting January’s usage.
- For the average residential member, estimated monthly bill adjustments are as follows:

- January: Based on average use of 957 kWh, bills will increase by approximately \$9.67.
- April: Based on average use of 612 kWh, bills will increase by approximately \$5.87
- August: Based on See PCA continued on Page 5

[illegible]

## Concern for Community

## REC scholarships available, apply online

The ***SLV REC Adams State University Four-Year Scholarship*** is renewable for up to a maximum of four years. The value of the scholarship equals the total of in-state tuition, some fees and a book allowance for the award year. S

Other scholarships include the following:

**See SCHOLARSHIPS** continued on Page 2

NOVEMBER 2025 | VOLUME 52 | ISSUE 10

# Statement of Ownership

UNITED STATES POSTAL SERVICE® Statement of Ownership, Management, and Circulation (All Periodicals Publications Except Requester Publications)			
1. Publication Title <b>The Newsboy</b>		2. Publication Number <b>551 - 450</b>	
3. Filing Date <b>10/1/2025</b>		4. Issue Frequency <b>monthly</b>	
5. Number of Issues Published Annually <b>11</b>		6. Annual Subscription Price <b>\$0.00</b>	
7. Complete Mailing Address of Known Office of Publication (Not printer) (Street, city, county, state, and ZIP+4®) <b>P.O. Box 3625, Monte Vista, CO 81144</b>		Contact Person <b>Jennifer Alonzo</b> Telephone (include area code) <b>719-852-6660</b>	
8. Complete Mailing Address of Headquarters or General Business Office of Publisher (Not printer) <b>San Luis Valley REC, P.O. Box 3625, Monte Vista, CO 81144</b>			
9. Full Names and Complete Mailing Addresses of Publisher, Editor, and Managing Editor (Do not leave blank) Publisher (Name and complete mailing address) <b>San Luis Valley REC, P.O. Box 3625, Monte Vista, CO 81144</b> Editor (Name and complete mailing address) <b>Jennifer Alonzo, P.O. Box 3625, Monte Vista, CO 81144</b> Managing Editor (Name and complete mailing address) <b>Eric Eriksen, P.O. Box 3625, Monte Vista, CO 81144</b>			
10. Owner (Do not leave blank. If the publication is owned by a corporation, give the name and address of the corporation immediately followed by the names and addresses of all stockholders owning or holding 1 percent or more of the total amount of stock. If not owned by a corporation, give the names and addresses of the individual owners. If owned by a partnership or other unincorporated firm, give its name and address as well as those of each individual owner. If the publication is published by a nonprofit organization, give its name and address.) Full Name Complete Mailing Address <b>San Luis Valley REC P.O. Box 3625, Monte Vista, CO 81144</b>			
11. Known Bondholders, Mortgagees, and Other Security Holders Owning or Holding 1 Percent or More of Total Amount of Bonds, Mortgages, or Other Securities. If none, check box <input checked="" type="checkbox"/> None Full Name Complete Mailing Address			
12. Tax Status (For completion by nonprofit organizations authorized to mail at nonprofit rates) (Check one) The purpose, function, and nonprofit status of this organization and the exempt status for federal income tax purposes: <input checked="" type="checkbox"/> Has Not Changed During Preceding 12 Months <input type="checkbox"/> Has Changed During Preceding 12 Months (Publisher must submit explanation of change with this statement) PS Form 3526, July 2014 [Page 1 of 4 (see instructions page 4)] PSN: 7530-01-000-9931 PRIVACY NOTICE: See our privacy policy on www.usps.com.			
13. Publication Title <b>The Newsboy</b>		14. Issue Date for Circulation Data Below <b>October 2025</b>	
15. Extent and Nature of Circulation		Average No. Copies Each Issue During Preceding 12 Months	
Members		No. Copies of Single Issue Published Nearest to Filing Date	
a. Total Number of Copies (Net press run)		<b>1141 1050</b>	
b. Paid Circulation (By Mail and Outside the Mail)		<b>705 685</b>	
(1) Mailed Outside-County Paid Subscriptions Stated on PS Form 3541 (include paid distribution above nominal rate, advertiser's proof copies, and exchange copies)		<b>248 242</b>	
(2) Mailed In-County Paid Subscriptions Stated on PS Form 3541 (include paid distribution above nominal rate, advertiser's proof copies, and exchange copies)		<b>0 0</b>	
(3) Paid Distribution Outside the Mails Including Sales Through Dealers and Carriers, Street Vendors, Counter Sales, and Other Paid Distribution Outside USPS® (e.g., First-Class Mail®)		<b>0 0</b>	
(4) Paid Distribution by Other Classes of Mail Through the USPS (e.g., First-Class Mail®)		<b>0 0</b>	
c. Total Paid Distribution (Sum of 15b (1), (2), (3), and (4))		<b>953 927</b>	
d. Free or Nominal Rate Distribution (By Mail and Outside the Mail)		<b>0 0</b>	
(1) Free or Nominal Rate Outside-County Copies included on PS Form 3541		<b>0 0</b>	
(2) Free or Nominal Rate In-County Copies included on PS Form 3541		<b>0 0</b>	
(3) Free or Nominal Rate Copies Mailed at Other Classes Through the USPS (e.g., First-Class Mail)		<b>0 0</b>	
(4) Free or Nominal Rate Distribution Outside the Mail (Carriers or other means)		<b>0 0</b>	
e. Total Free or Nominal Rate Distribution (Sum of 15d (1), (2), (3) and (4))		<b>0 0</b>	
f. Total Distribution (Sum of 15c and 15e)		<b>953 927</b>	
g. Copies not Distributed (See Instructions to Publishers #4 (page #3))		<b>188 123</b>	
h. Total (Sum of 15f and g)		<b>1141 1050</b>	
i. Percent Paid (15c divided by 15f times 100)		<b>100% 100%</b>	
16. Electronic Copy Circulation		Average No. Copies Each Issue During Preceding 12 Months	
a. Paid Electronic Copies		No. Copies of Single Issue Published Nearest to Filing Date	
b. Total Paid Print Copies (Line 15c) + Paid Electronic Copies (Line 16a)		<b>5739 5754</b>	
c. Total Print Distribution (Line 15f) + Paid Electronic Copies (Line 16a)		<b>6692 6681</b>	
d. Percent Paid (Both Print & Electronic Copies) (16b divided by 16c × 100)		<b>6692 6681</b>	
e. Percent Paid (Both Print & Electronic Copies) (16b divided by 16c × 100)		<b>100% 100%</b>	
<input type="checkbox"/> I certify that 50% of all my distributed copies (electronic and print) are paid above a nominal price.			
17. Publication of Statement of Ownership <input checked="" type="checkbox"/> If the publication is a general publication, publication of this statement is required. Will be printed in the <b>November 2025</b> issue of this publication. <input type="checkbox"/> Publication not required.			
18. Signature and Title of Editor, Publisher, Business Manager, or Owner <b>Jennifer F. Alonzo, Marketing/Communications Manager</b> Date <b>10.01.2025</b>			
I certify that all information furnished on this form is true and complete. I understand that anyone who furnishes false or misleading information on this form or who omits material or information requested on the form may be subject to criminal sanctions (including fines and imprisonment) and/or civil sanctions (including civil penalties).			

## SCHOLARSHIPS

continued from page 1

The \$4,000 **Robert Wolfe Scholarship** was established for students furthering their education in an agricultural or engineering field and may be used at any trade school, college or university.

The \$4,000 **Michael Rierson Scholarship** can be used toward further education at any trade school, college or university.

The \$4,000 **James & Thomas Magness Scholarship** was created for students furthering their education in an electrical field (electrician; electrical-contractor, engineering or lineman; communications tech, etc. at any trade school, college or university.

REC also offers the **SLVREC Past Director/Tri-State Scholarship** and the **SLVREC Past Retired GM Ray Villyard & CEO John Villyard/Tri-State Scholarship**, both of which are valued at \$2,500/each.

New for 2026 is the \$500 **Cole Wakasugi Memorial Ag Scholarship**. This is a one-time award in memory of former board member Cole Wakasugi, who passed away in 2023. This scholarship was established for students furthering their education in an agricultural field and may be used at **any** trade school, college or university.

In addition, the **Basin Electric Power Cooperative Scholarship** is available to dependents of members and dependent children of SLVREC employees.

For full requirements and details, see the scholarship application online at <https://slvrec.com/scholarships>

# ciello

## THIS IS OUR WHY...

"Excellent support! These guys take it seriously when you break something and fix it for you very promptly."  
—Neal Williams, Google Review

POWERED BY REC

719.852.3538 • [www.ciello.com](http://www.ciello.com)

Ciello is proud to feature testimonials from our satisfied customers in issues of the Newsboy. Send your testimonials to [jalonzo@slvrec.com](mailto:jalonzo@slvrec.com).



**Eric Eriksen**

## Preparing for the growing threat of wildfire

Across the U.S., the threat of wildfire has increased significantly in recent years. For electric utilities, the danger is all too real, as dry vegetation can easily ignite from power line contact—especially during periods of high winds, which can accelerate the spread of wildfire.

In some cases, electric utilities may be financially liable for a fire linked to utility equipment. Utilities may be held responsible for the fire, its suppression costs and any natural resource damages when they are not at fault under strict federal liability statutes. This can even be the case when wildfires result from events beyond their control, such as wind-driven debris igniting fires.

### Advocating for better processes

Utilities are advocating to improve wildfire prevention efforts. The Fix Our Forests Act, a bipartisan bill currently moving through Congress, aims to streamline these processes. It would expand vegetation clearance zones around power lines on Federal land and shield utilities from unwarranted lawsuits. Utilities are also establishing forest operating agreements with the U.S. Forest Service to reduce strict liability.

The Colorado Rural Electric Association has identified Wildfire Mitigation and liability standards as a top priority for the 2026 Colorado legislative session. Their focus is on safety, reliability and mitigating costs to electric cooperative members, such as the rising cost of insurance premiums.

### Planning and mitigation strategies

As wildfire threats increase, SLVREC is creating a detailed mitigation plan. The purpose of this plan is to:

1. Enhance the safety of SLVREC's members, employees and communities.
2. Protect critical electric infrastructure that supports homes, farms, schools and businesses across the San Luis Valley.
3. Reduce the potential for electrical equipment to ignite wildfires.
4. Support long-term system resilience and reliability in alignment with SLVREC's 5-Year Wildfire Mitigation.

On Oct. 8, 2025, SLVREC hosted a wildfire mitigation plan stakeholder meeting where SLVREC engineering and operations teams presented the results of our new Wildfire Hazard Assessment Map and draft mitigation strategies. We are taking a community approach by listening to our members and local partners.

Key strategies and investment areas identified are:

- Weather & Condition Monitoring
- Fuel & Vegetation Management – ROW widening
- Inspection & Corrective Responses
- Electric System Protection Technologies
- Electric System Hardening
- Public Safety Power Shutoffs (PSPS) – Evaluating PSPS as a last-resort risk reduction tool, including criteria for use, communication protocols and community impact mitigation.

SLVREC is utilizing new and

**See WILDFIRE continued on Page 4**

### BOARD OF DIRECTORS

Stephen Valdez, President  
Conejos/Costilla Counties  
719-588-0430

Wade Lockhart, Vice-President  
Member at Large  
719-588-9246

Creede Hargraves, Secretary/Treasurer  
Mineral/Hinsdale Counties  
708-638-0039

Keenan Anderson  
Saguache County  
719-849-8304

Carol Lee Dugan  
Rio Grande County  
719-588-4711

Scott Wolfe  
Alamosa County  
719-588-0139

Email: [power@slvrec.com](mailto:power@slvrec.com)

Your email will be forwarded based on the direction you provide in your subject line.

### CEO

Eric Eriksen  
719-852-6630

SLVREC Office (toll free)  
800-332-7634

SLVREC Office (local calls)  
719-852-3538

### PUBLISHER'S STATEMENT

The Newsboy (publication #551-450) is an official publication of the San Luis Valley Rural Electric Cooperative, Inc.; 3625 US Hwy 160 W, Monte Vista, CO 81144. The Newsboy is published monthly for SLVREC members. Periodical postage paid at Monte Vista, CO 81144.

Postmaster, send Form 3579 to NEWSBOY, P.O. Box 3625, Monte Vista, CO 81144-3625.

© 2025 San Luis Valley Rural Electric Cooperative. All rights reserved.

 [www.facebook.com/SLVREC](https://www.facebook.com/SLVREC)

 [www.twitter.com/SLVREC](https://www.twitter.com/SLVREC)



# Meet your Coop

## Telecom tech transitions to system operator

Former telecom technician Chris Villagomez recently transitioned into the role of system operator at SLVREC/Ciello. He spent nearly 11 years working in the telecommunications branch of the cooperative and felt it was time for a big change.

Chris says, “this position feels like the hub for everything that is happening in the field.” He’s learning new electric language every day. “The biggest challenge is being brand new to the electric/operations side of the coop.”

Chief Operations Officer Monroe Johnson expressed his appreciation for Chris’s contributions to our broadband project. “Chris brought a lot of expertise and dedication to his responsibilities as a Ciello technician! He always had a great attitude, and he always provided great service to our customers!”

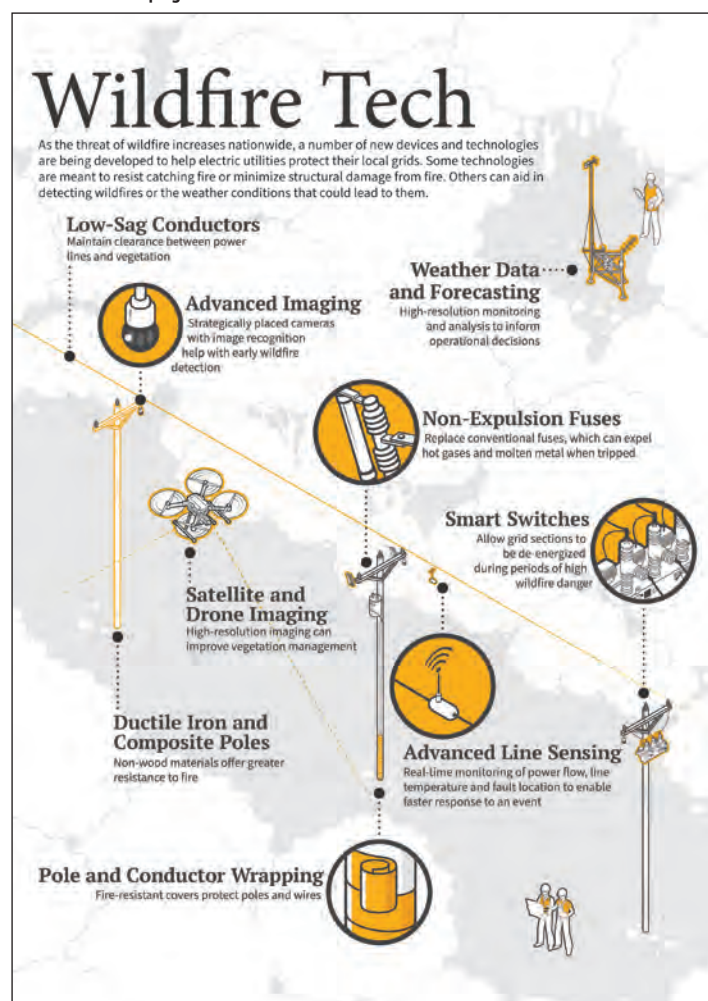
Chris and his wife have two children; his hobbies include anything outdoors and old trucks. He especially



enjoys camping with his family and watching his kids grow and play sports. In closing, Chris says, “this is a very loving work environment with people that care for me.”

## WILDFIRE

continued from page 3.



developing technologies to safeguard the local electric system. Some technologies help reduce the risk of fire and minimize structural damage, such as fire-resistant poles, covered conductors and non-expulsion fuses, which eliminate the expulsion of gases and molten metal when tripped. Additionally, SLVREC is exploring the utilization of tools that aid in detecting wildfire or weather conditions that could lead to them. Technologies, such as satellite and drone imaging, advanced power line sensors and strategically placed pole cameras are just a few examples of how utilities can keep a closer eye on the local grid and spot potential risks. Combining multiple data sources into an AI risk assessment model can aid in making faster, better decisions.

In addition to advocacy efforts and technologies to better protect against wildfires, co-ops understand that community collaboration is key. By working with government agencies, local businesses and community groups, co-ops will be better prepared for wildfire prevention and response. We are committed to delivering long-term safety, reliability and affordability – values that guide every decision we make in service to you.

If you have any questions or concerns, please don’t hesitate to reach out to us. We’re always happy to help!

## Examples of Electric Utility Industry Wildfire Mitigation Technologies



## Recipe of the Month

### INGREDIENTS

- 1 T. butter
- ½ c. chopped onion
- ½ c. chopped celery
- 4 (14.5-oz.) cans chicken broth
- 1 (14.5-oz.) can vegetable broth
- ½ lb. chopped cooked chicken breast
- 1 ½ c. egg noodles
- 1 c. sliced carrots
- ½ t. dried basil
- ½ t. dried oregano
- salt and ground black pepper to taste

### QUICK AND EASY CHICKEN NOODLE SOUP

1. Melt butter in a large pot over medium heat. Add onion and celery and cook until just tender, about 5 minutes.
2. Add chicken broth, vegetable broth, chicken, egg noodles, carrots, basil, oregano, salt and pepper. Stir to combine and bring to a boil.
3. Reduce heat and simmer for 20 minutes.

# ciello

COULD BE AVAILABLE IN YOUR AREA!

FIND OUT ONLINE AT [CIELLO.COM](http://CIELLO.COM)  
OR CALL 719.852.3538

*Historical Happenings will return next month*

## PCA

continued from page 1

average use of 491 kWh, bills will increase by approximately \$4.33.

—Across all 12 months, the annual average adjustment is estimated at a \$6.24 increase per month for a household using an average of 651 kWh.

- As a not-for-profit cooperative, Tri-State remains focused on providing reliable and affordable power for members, including SLVREC.

- Tri-State is making major investments in generation and transmission to meet reliability standards and environmental requirements while serving member growth at the lowest possible cost.

- Broader economic and industry factors — such as tariffs, clean energy tax credit changes, and regulatory uncertainty — have amplified these rate impacts.

- Tri-State continues to work to mitigate wholesale rate increases by reducing expenses and optimizing member assets whenever possible.

## ENERGY EFFICIENCY TIP OF THE MONTH

With the holiday season approaching and more time spent in the kitchen, consider ways to save energy in the heart of your home. When possible, cook meals with smaller, energy efficient appliances, such as toaster ovens, slow cookers and air fryers. When using the range, match the size of the pan to the heating element. Keep range-top burners and reflectors clean so they reflect heat more efficiently. After your holiday meals are complete, load the dishwasher fully before starting the wash cycle.

Source: [energy.gov](http://energy.gov)







P.O. Box 3625  
Monte Vista, CO 81144

November 2025

Periodical Postage  
Paid at Monte Vista, CO



REC's office is open from 7 a.m. to 5 p.m. Monday through Thursday.

**ENERGY ASSISTANCE**  
866-HEAT HELP (866-432-8435)  
[www.energyoutreach.org](http://www.energyoutreach.org)

Your Touchstone Energy®  
Cooperative 

**SCHEDULED MEETINGS**

Board Meeting: November meeting, TBA  
The REC Board of Directors typically meets the last Tuesday of each month unless otherwise stated. Members are welcome; advance notice required.

This institution is an equal opportunity employer.

