

Member Information

Rate increase will be effective April 1

On Jan. 28, the SLVREC Board of Directors plan to approve a proposed rate increase for 2025.

The rate adjustment is necessary to cover increasing operating costs and ensure continued delivery of safe and reliable electric services to REC members. This increase spans all rate classes and is set to take effect on April 1, 2025. Rising costs of everything and the business landscape is changing faster than ever making this increase imperative; REC is absorbing a significant portion of its increased costs to mitigate the impact on its members. Rates will be published and distributed to members upon final approval. [Rates were not yet approved as of press time].



Anderson awarded 'trip of a lifetime'

High school junior Reese Anderson has been chosen as SLVREC's participant in the annual Washington DC Youth Tour. She receives an all-expense paid trip in June 2025 where she will join more than 1,800 other high school students to spend a week in the nation's Capitol as part of this year's Electric Cooperative Youth Tour.



Reese Anderson

Reese has been involved in 4-H for 10 years; she is the vice president of the District 8 4-H Leadership Council. She also plays volleyball and excels in academics.

In her application essay, Reese stated, "Reflecting on all that the

See YOUTH continued on Page 4

Concern for Community

High-speed Internet coming to Spar City

San Luis Valley Rural Electric Cooperative (SLVREC) was recently announced as the recipient of a \$410,436 grant to deploy fiber-to-the-premises services in Spar City, Mineral County. This Community Connect Grant Program, administered by the Rural Utilities Service (RUS), helps fund broadband deployment in rural communities where it is not yet economically viable for private-sector providers to deliver service.

The grants offer financial assistance to eligible service providers that will construct, improve, or expand broadband networks in rural areas. SLVREC's subsidiary, Ciello, will use the grant to connect 35 cabins in Spar City to high-speed Internet.

"We are really excited to have the opportunity to bring world-class high-speed Internet to the community of Spar City," said Ciello's Chief Technology Officer Monroe Johnson. "We have been searching for a way to bring high-speed Internet to this community for some

time. The Community Connect grant fits this situation perfectly. We are honored that our grant application was funded, and we are looking forward to bringing broadband service to the residents of Spar City."

U.S. Department of Agriculture (USDA) Rural Utilities Service Administrator Andy Berke announced \$63.8 million in awards through the Community Connect Program to provide high-speed Internet in 12 states: Alaska, Arkansas,

See GRANT continued on Page 2

THIS ISSUE

[Member info/ Concern for Community](#)

[Member Info/Conservation/Ciello](#)

[Eric Eriksen](#)

[2025 Roadmap](#)

[Historical Happenings](#)

FEBRUARY 2025 | VOLUME 52 | ISSUE 2

Member Information

Factors that impact your energy bill

February brings some of the coldest weather of the year, and as our home heating systems work harder and longer to keep us warm, we typically see higher energy bills.

There are a few key factors that affect electricity prices, as well as a few ways you can make a meaningful impact on home energy savings.

When you receive your monthly bill from San Luis Valley REC, you're provided with a summary of how much electricity you used during the billing cycle.

But you might be surprised to learn that beyond your monthly energy consumption, there are external factors that can impact the cost of electricity.

Fuel prices

REC purchases electricity from our power generation partner, Tri-State G&T Association, at a wholesale cost, then we deliver that power to our local communities.

The cost of generating and transmitting electricity from our generation partner accounts for a significant portion of the cost to provide electric service to local homes and businesses-- and the cost of fuels that are used to generate that electricity, such as natural gas and coal, fluctuate based on supply and demand. While these fluctuations can **See BILL continued on Page 5**

GRANT

continued from page 1

Colorado, Idaho, Kentucky, Louisiana, Maine, Missouri, Mississippi, Virginia, Washington and Wisconsin.

"The Biden-Harris Administration has given USDA unprecedented funding to provide high-speed Internet to rural areas... that have been forgotten or left behind," Administrator Berke said. "Rural Americans have enormous potential, but it's very hard to reach your potential if you don't have high-speed Internet. We are completely committed to making sure every person in rural America has high-speed Internet so they have new opportunities and a better chance to succeed."

Community Connect Program Background

The Community Connect Program helps rural communities extend access where high-speed Internet service is least likely to be commercially available, but where it can make a tremendous difference in the quality of life for rural people and businesses. The projects funded by these grants help rural residents tap into the enormous potential of the Internet for jobs, education, healthcare, public safety and community development. Recipients of Community Connect awards use grant funds to equip community centers that provide free access to high-speed Internet service to area residents for at least two years.

ENERGY EFFICIENCY TIP OF THE MONTH

If you have a home office, look for opportunities to save energy in your workspace. Use ENERGY STAR®-rated equipment, which consumes up to 50% less energy than standard models. Set equipment like printers and scanners to automatically switch to sleep or energy-saver mode when not in use. In addition to saving energy, the equipment will stay cooler, which will help extend its life. Another way to save energy in your home office is to use efficient lamps for task lighting. Replace any older bulbs with energy-saving LEDs.

Source: energy.gov

ciello
This is our why...

"Just completed a maintenance call—Kelby, the tech who came out to service my system was great—polite, professional, efficient. Love REC and Ciello!"

— Amy Houssell,
Google Review

POWERED BY REC

719.852.3538 • www.ciello.com

Ciello is proud to feature testimonials from our satisfied customers in issues of the Newsboy. Send your testimonials to jalonzo@slvrec.com.



Eric Eriksen

2025 Roadmap

Your SLVREC team has developed a 2025 Roadmap, which describes our key initiatives for the year ahead (figure on following page).

Illustrated in the **GOALS** section are four focus areas: Workforce, Financial, Reliability and Communications. Under them you'll find a list of goals that SLVREC plans to accomplish this year. Each one is aligned to drive us toward our Five-Year Strategic Plan. Here is a brief description of each one for you:

Workforce

- Team Service Projects: To develop leadership, teamwork and service to others through team projects
- We CARE employee events: To deliver a leadership educational moment and cultural team-building experience
- Operations Center Evaluation: To improve our main operations and dispatch center, which is central to our daily operations, safety, reliability, and member communication
- New Mapping Software: To improve our asset management, safety and reliability
- Process Improvement Training Phase II: Our goal is constant improvement; we've adopted a globally recognized change management process named Lean Six Sigma. Phase II further delivers certification training to employees and process improvement projects to deliver the best value to members.

Financial

- Alamosa Network Operations Center (NOC) Generator: Support exceptional

Ciello reliability and financial resiliency

- Powerline Inspection Evaluation: To improve our electrical system equipment inspection process, which is important for safety, reliability and affordability—AI technology will be a consideration
- Develop Wildfire Mitigation Plan: Proactively plan to mitigate national, state and local concerns for potential health, safety and financial impacts of wildfires.
- Microgrid Plan: To study and evaluate the feasibility of adding utility scale battery storage to new solar facilities at Moffat and Creede Substation. Prioritizing affordable rates while improving regional resiliency.

Reliability

- Cyber Security Plan: To mitigate the ever-increasing threat of a cyber-attack—The security of our financial integrity and system reliability depends on our cyber defenses
- Energy Resource Plan: To study and develop a 20-year planning document to evaluate how to provide the most affordable and reliable energy for the future of SLV. This is in response to the newly FERC-approved Tri-State program named Bring Your Own Resource (BYOR), which creates the opportunity for us to develop up to 40 percent local power generation.
- Smart Grid Plan: To develop a 10-year plan aligning our current and future technologies that maximize performance and efficiency for members
- Improve Wireless Service: Implement improved technology to achieve faster speeds and reliability

See 2025 continued on Page 4

BOARD OF DIRECTORS

Keenan Anderson, President
719-849-8304

Stephen Valdez, Vice President
719-588-0430

Wade Lockhart, Secretary
719-588-9246

Carol Lee Dugan
719-588-4711

Creede Hargraves
708-638-0039

Scott Wolfe
719-852-0966

Email: power@slvrec.com

Your email will be forwarded based on the direction you provide in your subject line.

CEO

Eric Eriksen
719-852-6630

SLVREC Office (toll free)
800-332-7634

SLVREC Office (local calls)
719-852-3538

PUBLISHER'S STATEMENT

The Newsboy (publication #551-450) is an official publication of the San Luis Valley Rural Electric Cooperative, Inc.; 3625 US Hwy 160 W, Monte Vista, CO 81144. The Newsboy is published monthly for SLVREC members. Periodical postage paid at Monte Vista, CO 81144.

Postmaster, send Form 3579 to NEWSBOY, P.O. Box 3625, Monte Vista, CO 81144-3625.

© 2024 San Luis Valley Rural Electric Cooperative. All rights reserved.



www.facebook.com/SLVREC



www.twitter.com/SLVREC

Communications

- Employee Resource Center: To design a central

resource for employees to find and share information more readily—improving employee work experience

- Member Rate Communication: To educate and prepare members for changes to rates in 2025 and ahead

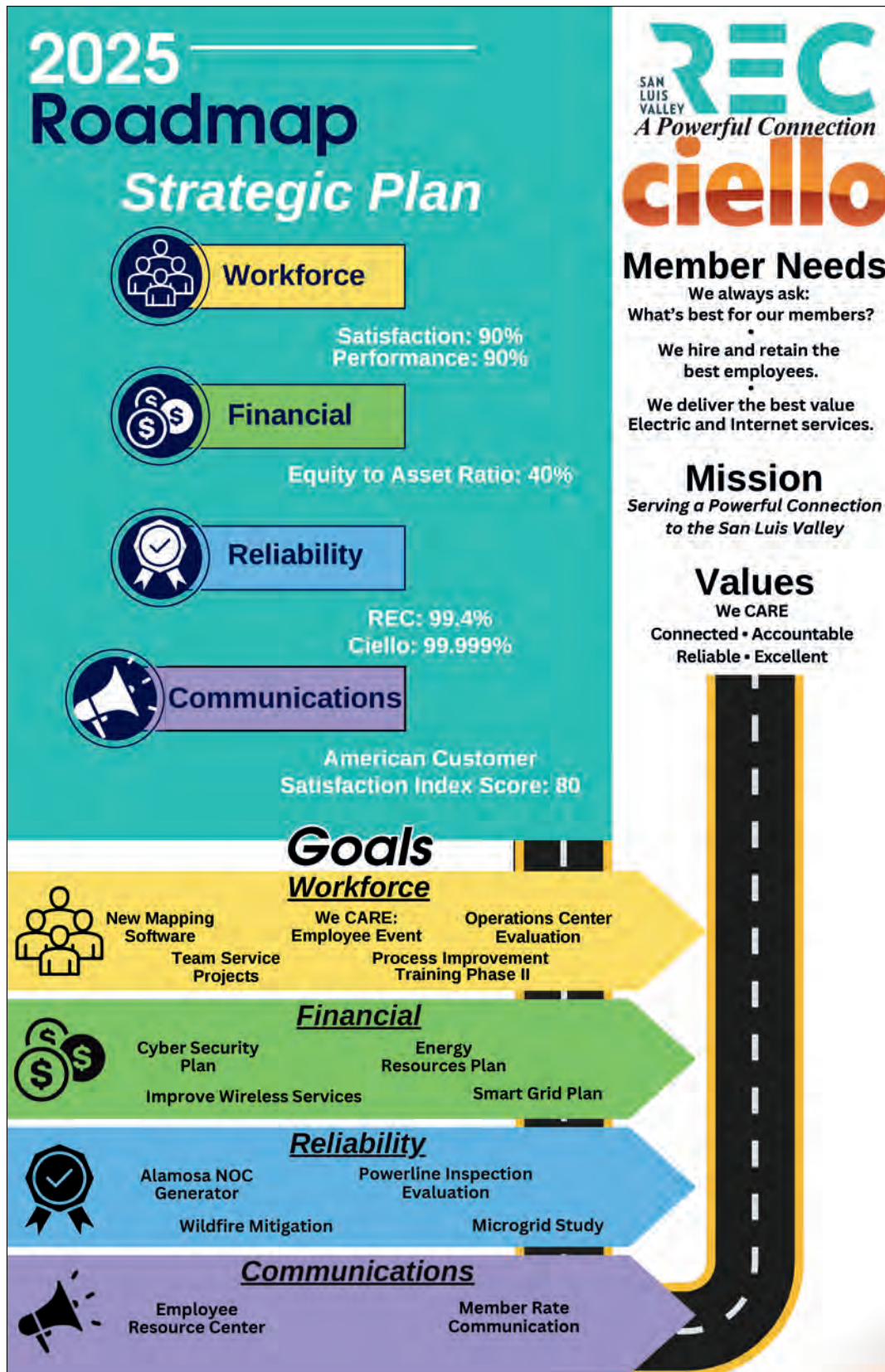
You can find the 2025 Roadmap on our website at slvrec.com/about-us. Please reach out to request a “road show” presentation to your business or organization and feel free to walk-in and visit any time.

We’re here whenever you need us. Connect with us online, in person or through our social media channels. However, you choose to connect, please let us know how we can serve you better.

YOUTH

continued from page 1

Washington DC Youth Tour has to offer, I am filled with excitement and gratitude that I live in an area where it is made available. From exploring historical landmarks to diving into the depths of our American history, I imagine this trip will be one that will never be forgotten. If I am awarded this amazing trip from my application, I will most certainly encourage friends and family to do the same. I would also like to thank SLV REC for giving their community youth this incredible opportunity.”



BILL

continued from page 2

impact the cost of electricity, we work closely with Tri-State to plan ahead and help stabilize electricity prices for our members.

Extreme weather

While we can't control the weather, we can review weather patterns and forecasts to prepare for times of extreme cold or heat, when we know the demand for electricity will increase. But when temperatures become extremely cold and the demand for electricity spikes, the price of electricity can also increase.

Infrastructure and equipment

To cover the costs associated with providing electricity to your home or business, REC members pay a monthly Customer Charge. This flat monthly fee ensures the cost of equipment, materials, labor and daily operations are covered for all members in REC's service territory. To ensure the reliable service you expect and deserve, we

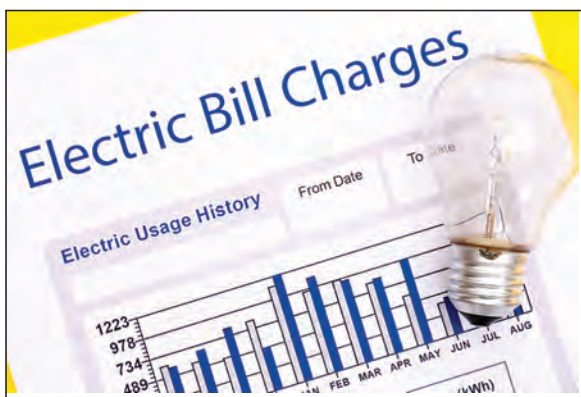
must maintain the local grid, including power lines, substations and other essential equipment.

Energy policy and regulations

Federal energy policies and regulations can have a profound impact on electricity costs. As energy generation shifts to the use of more renewable sources and stricter regulations for traditional, always-available fuel sources, such as natural gas and coal plants, costly upgrades and technologies must be constructed and deployed. These additional costs are ultimately passed to consumers.

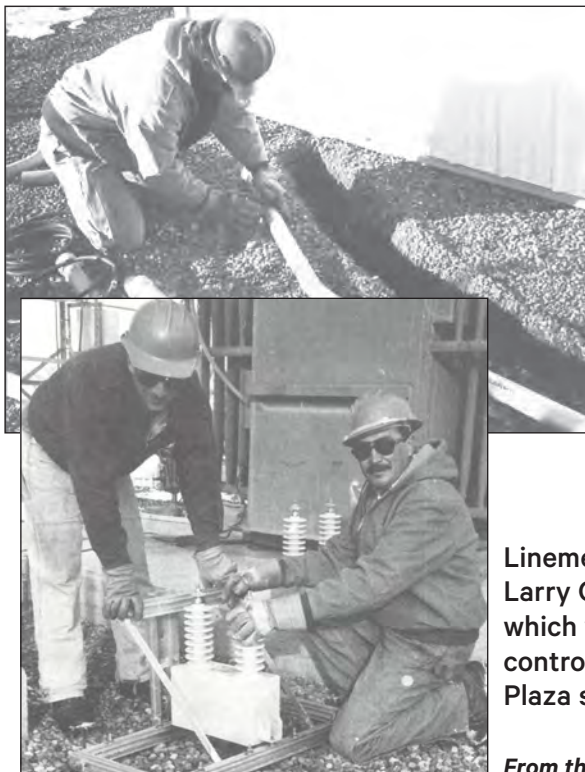
U.S. power consumption is expected to double by 2050. Across the country, electric cooperatives are working with members of Congress to advocate for smart energy policies that reliably power our local communities.

See next month's *Newsboy* for ways to help manage your energy use at home.



Historical Happenings

Installing SCADA



In picture at far left, Substation Technician John Velasquez trenches for control and monitoring cables at Zinzer substation. Coaxial cables will connect substation equipment to monitoring equipment inside control building.

Top, center: Lineman Ronnie Spencer installs PVC conduit which will protect cables.

Linemen Ryan Christensen and Larry Gonzales inspect capacitors which will inject monitoring and control signals onto the line at the Plaza substation.

From the December 1996 *Newsboy*

REC
SAN LUIS VALLEY
A Powerful Connection
ciello

P.O. Box 3625
Monte Vista, CO 81144

February 2025

Periodical Postage
Paid at Monte Vista, CO



Monte Vista High School Junior Claire Seger

POWERING OUR COMMUNITY

REC's office is open from 7 a.m. to 5 p.m. Monday through Thursday.

ENERGY ASSISTANCE
866-HEAT HELP (866-432-8435)
www.energyoutreach.org

Your Touchstone Energy®
Cooperative 

SCHEDULED MEETINGS

Board Meeting: Tuesday, Feb. 25, 2025, 9:30 a.m.
The REC Board of Directors typically meets the last Tuesday of each month unless otherwise stated. Members are welcome; advance notice required.

This institution is an equal opportunity employer.

Congrats on your Milestone Anniversaries! 2024



Jennifer Alonzo
5 Years



Kevin McCarroll
5 Years



Vanessa Sisneros
5 Years



Gaben Gutierrez
5 Years



Justin Harrison
10 Years



Rudy Vialpando
10 Years



Monroe Johnson
10 Years



Manny Garcia
20 Years

2025 Annual Meeting

SLVREC's annual business meeting
will be held on
Tuesday, June 10, 2025 • Time: TBA
at Ski Hi Events Center

Petition packets will be available online
by Feb. 15, 2025
at slvrec.com/annual-meeting