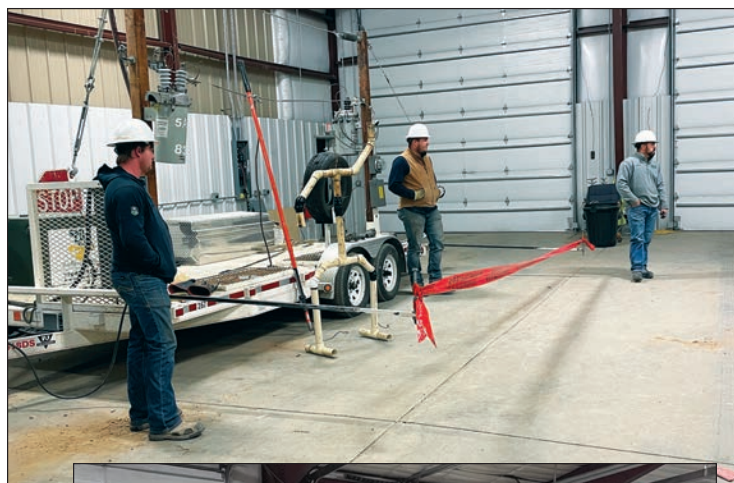


## Concern for Community

### REC employees give back



Above: REC staff members served breakfast at the 40th Annual Southern Rocky Mountain Agriculture Conference on Feb. 2. At right: Linemen presented a high voltage demonstration to members of the Monte Vista Fire Department in January.



## Meet your co-op

### Journeyman Dylan Stroud joins REC



Dylan Stroud from Paonia has joined the REC team as a journeyman lineman. He comes to us from Altitude Energy in Keenesburg and is excited to be in the San Luis Valley.

Dylan was with Mountain Parks Electric, Inc. in Granby prior to working for Altitude and journeyed out in 2019. He attended line school at Colorado Mesa University and is a 2013 Paonia High School graduate.

His favorite part of being a lineworker is operating big trucks and doing hot work. Dylan is enjoying his time at REC so far, "it's a good group of guys."

Dylan's five-year-old daughter and his girlfriend will be joining him soon and making their home in Alamosa. In his spare time Dylan likes hunting, fishing, boating and Jeeping, so the Valley is a perfect fit for him. Welcome to the team, Dylan!

### THIS ISSUE

Concern for community

Member information/Conservation

Loren Howard: Beneficial electrification

Member info: Save energy/Petitions

Recipe/Historical happenings

MARCH 2022 | VOLUME 50 | ISSUE 3

## Member information



### Time-of-Day hours changing April 1

For those members on the Schedule A-Time of Day rates (A-TOD and A2-TOD), the on-peak times will be changing as of April 1, 2022.

An analysis of REC's wintertime peaks was performed as part of the 2021 Cost of Service Study, and it found SLVREC was not peaking until after 5 p.m. allowing us to be able to shorten the on-peak window. The new TOD schedule (noted at right) will help members use the off-peak hours more effectively. Even though Sunday is no longer all off-peak hours, the new TOD schedule offers members 20 more off-peak hours per week than the previous schedule did. In addition, the new schedule will help alleviate the difficulties some heaters were having getting through the 10-hour on-peak window. Meters will be reprogrammed remotely in late March.

Also, as a reminder please double check the settings on your ETS unit. The heater should say "P" during on-peak times and "C" during off-peak times. If this doesn't match, please call customer service so we can reprogram your meter.

And finally, don't forget there is a list of current electricians that service and maintain ETS units on our website:

[www.slvrec.com/electric-thermal-storage-ets-heaters](http://www.slvrec.com/electric-thermal-storage-ets-heaters) (Under the "Services" tab, click "Electric Thermal Storage (ETS) Heaters," on the right there is a sliding window, which features Valley electricians).

If you have further questions, please call customer service at 719-852-3538 for assistance.

### Daily TOD Hours

(effective April 1, 22)

**On-Peak Hours:**  
**5 PM to 10 PM**

**Monday-Sunday**  
(every day)

**Off-Peak Hours:**  
**All other hours**

**Monday-Sunday**  
(every day)

***\*\*Please note: Sundays are  
no longer all off-peak\*\****

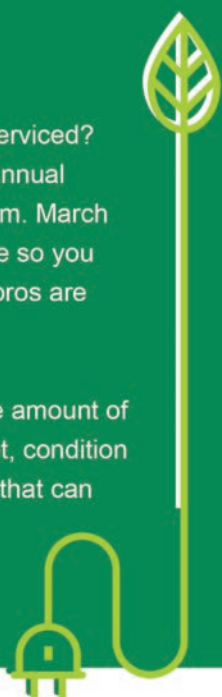
## Conservation corner

### Energy Efficiency Tip of the Month

When was your cooling system last serviced? Most manufacturers recommend an annual tune up for your home's cooling system. March is a great time to schedule this service so you can beat the summer rush when the pros are busiest.

A qualified professional can check the amount of refrigerant, accuracy of the thermostat, condition of belts and motors and other factors that can greatly impact the efficiency of your system.

Source: Dept. of Energy



**ciello**  
*Proudly serving our neighbors...*

"Just wanted to tell you how awesome your Internet is in Creede. To have this consistent, high-speed Internet there is amazing. I also have my own business, so when working from home during the pandemic, this just made it so easy to do. Problems are so infrequent; we don't even notice anything. It's great!"

—Drew Marino, Creede

POWERED BY REC

719.852.3538 • [www.ciello.com](http://www.ciello.com)

Ciello, Powered by REC, is proud to feature testimonials from our satisfied customers in upcoming issues of the Newsboy.

Send your testimonials to [jalonzo@slvrec.com](mailto:jalonzo@slvrec.com) to be featured.





Loren Howard

## Beneficial electrification and electricity usage

Beneficial electrification has become a pervasive phase in recent years, but what does it mean? There is a belief that converting products that currently use oil or gas to electricity is a good thing for the environment and possibly for the pocketbook. While that has potential, it is hard to accept that it is as simple as that.

The most obvious electrification effort is that of vehicles. Once an electric vehicle is produced, the cost to operate that vehicle is typically half the cost of a gas or diesel engine vehicle, but what about the cost to produce that vehicle? In addition, how reliable is the supply chain of the materials needed to produce that vehicle? In the past year, buying a new vehicle is not an easy proposition. The supply chain of integrated circuits, the electronics, has been substantially interrupted. The discussion and answers to these questions is way beyond the space available in this monthly column, but each of us should investigate and consider.

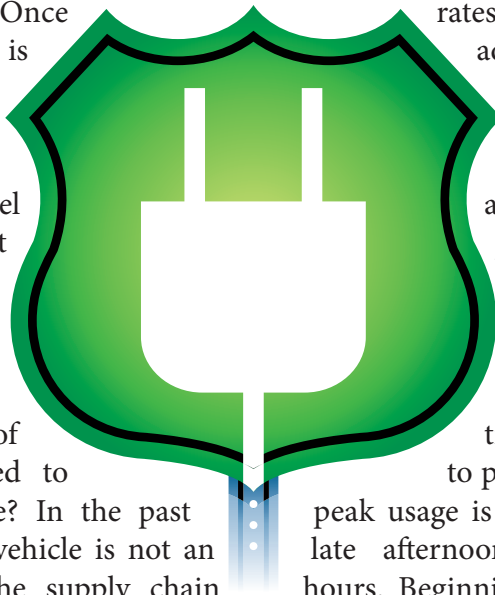
The conversation of beneficial electrification goes far beyond just vehicles, it includes how homes and businesses are heated, how meals are cooked and how you mow the lawn.

With all this new effort to use electricity to power our lives rather than oil or gasoline, what will be the impact on the electric industry and closer to home – REC?

REC has in recent years begun the transition to rate structures that ensure that equitable pricing of rates exists for all members of REC. One of those changes is the transition to time-of-use

rates. Time-of-use rates adjust the variable costs of electricity based on the time of use. Factoring all the costs of producing electricity, it is generally less expensive to produce and deliver during non-peak usage times when compared to peak usage time. REC's

peak usage is almost always in the late afternoon or early evening hours. Beginning on April 1, 2022, i.e. this year, REC's on-peak period will be from 5 p.m. to 10 p.m., seven days a week. All other hours will be off-peak. Rate designs that encourage using power during the off-peak period will help reduce demand charges from REC's wholesale power provider which in turn reduces REC's overall power costs. Members who can structure their electric usage to use more off-peak electricity can save on their power bill.



### BOARD OF DIRECTORS

Carol Lee Dugan, President  
719-852-3931

Keenan Anderson, Vice President  
719-849-8304

Stephen Valdez, Secretary  
719-588-0430

Scott Wolfe  
719-852-0966

Cole Wakasugi  
719-937-9514

Kip Nagy  
719-850-0749

Wade Lockhart  
719-588-9246

Email: [power@slvrec.com](mailto:power@slvrec.com)

Your email will be forwarded based on the direction you provide in your subject line.

### CEO

Loren Howard  
719-852-6630

SLVREC Office (toll free)  
800-332-7634

SLVREC Office (local calls)  
719-852-3538

### PUBLISHER'S STATEMENT

The Newsboy (publication #551-450) is an official publication of the San Luis Valley Rural Electric Cooperative, Inc.; 3625 US Hwy 160 W, Monte Vista, CO 81144. The Newsboy is published monthly for SLVREC members. Periodical postage paid at Monte Vista, CO 81144.

Postmaster, send Form 3579 to NEWSBOY, P.O. Box 3625, Monte Vista, CO 81144-3625.

© 2022 San Luis Valley Rural Electric Cooperative. All rights reserved.

 [www.facebook.com/SLVREC](https://www.facebook.com/SLVREC)

 [www.twitter.com/SLVREC](https://www.twitter.com/SLVREC)



## Member info

### Save energy when working from home

Today, more Americans are working from home than ever before. More time spent at home means more energy used throughout the day.

If you're punching the clock from home, there are small steps you can take to reduce your energy use and save on electric bills. Here are five easy ways to save energy when working from home.

**Use a smart power strip.** Plugging in your most-used devices, like computers, monitors and routers, to a smart power strip ensures these devices aren't drawing power when they're not in use. Smart power strips also give you the option to select which devices should stay in "always on" mode.

**Unplug your least-used equipment.** If your home office includes equipment like printers and scanners, you're probably not using these electronics every day. Go ahead and unplug your least-used electronics and devices, since many of these draw energy even when they're not being used.

**Choose ENERGY STAR®-certified office equipment.** If you're looking to purchase new equipment for your workspace, look for the ENERGY STAR® label to ensure you're getting the most energy efficient features. Computers, monitors, imaging equipment and other office electronics that receive the ENERGY STAR® rating include power management features to make saving energy easy, and most are designed to run cooler and last longer.

**Flip the switch and use natural light instead.** It's still chilly out there, so take advantage of natural light and additional warmth from the sun. When you're working during the day, open blinds, curtains and other window coverings to let natural light in--and don't forget to turn off the lights to reduce energy use!

**Lower the thermostat.** Home heating makes up a significant portion of your energy bills.

Turn the thermostat down a couple degrees during the day to reduce energy use and save money.

The Department of Energy recommends setting the thermostat to 68 degrees or cooler during winter months. You're more likely to stay focused and alert when it's cooler in your home, so even more reason to mind the thermostat.

Working from home doesn't have to take a toll on your energy bills, and whether you're working remotely or not, these practical tips can help everyone reduce their energy use.

### SLVREC Petitions for Nomination of Director Candidate now available

Petitions for the nomination of director candidates for REC are now available. Members can download the petition packet at the below link or pick up from REC's office at 3625 US Hwy 160 W., Monte Vista ([slvrec.com/annual-meeting](http://slvrec.com/annual-meeting))

At the June 14, 2022 REC Annual Meeting, one director will be elected from Mineral/Hinsdale Counties, District 6. Completed petitions must include 15 valid REC member signatures and be returned to REC no later than Wednesday, April 27, 2022. Please call Michelle at 719-852-3538 with any questions.

If you're interested in having a brief bio included on REC's website or in the Newsboy or Annual Report, please contact Jennifer Alonzo at 719-852-3538 by April 7, 2022.





## Recipe of the month

### INGREDIENTS

1 c. salted butter, at room temperature, 2 sticks  
 1-1/4 c. granulated sugar  
 1 large egg  
 1 t. vanilla extract  
 3 T. key lime juice  
 2 t. grated lime zest  
 1/2 t. Kosher salt  
 1/2 t. baking soda  
 2-1/4 c. all-purpose flour  
 1 c. finely crushed graham cracker crumbs  
 1/2 c. white chocolate

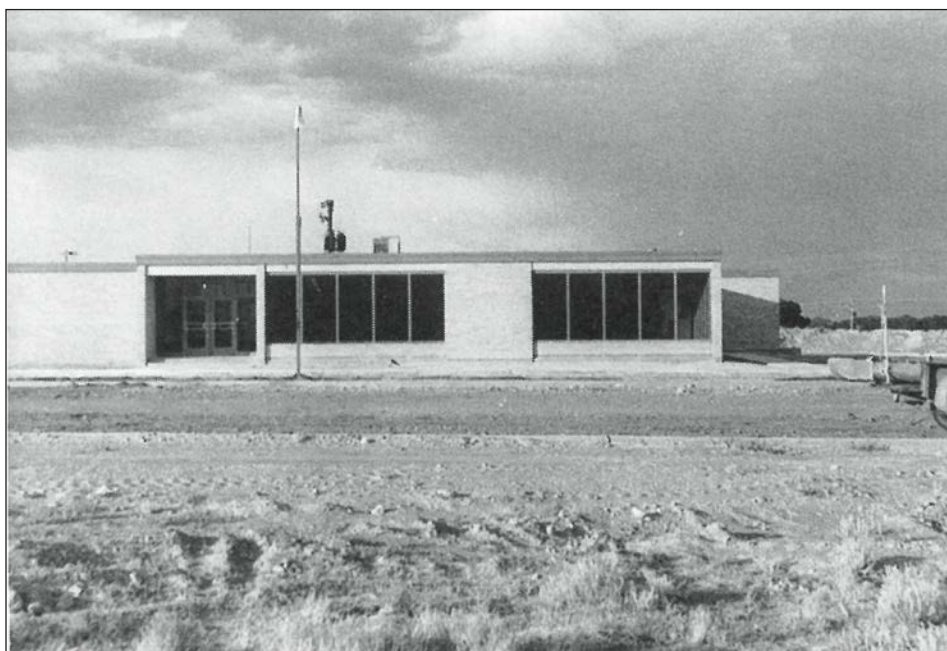
### KEY LIME PIE COOKIES

1. Preheat oven to 350F. Line baking sheet with parchment paper.
2. Mix butter and sugar on medium speed for 2 minutes until light and fluffy. Add egg, vanilla, key lime juice and lime zest and continue mixing for 1 more minute. Mix in salt and baking soda. Turn speed to low and add flour and graham cracker crumbs until the dough comes together.
3. Roll dough into 1-inch balls and place 2 inches apart on baking sheet. Bake for 9-10 minutes, until edges are lightly golden.
4. Place white chocolate in a microwave-safe bowl. Heat on full power for 25 seconds. Remove bowl from microwave and stir chocolate. Repeat this process until the white chocolate is melted and smooth. Transfer the melted chocolate to a small zip-top bag. Snip one corner of the bag off with scissors and drizzle the white chocolate on top of the cookies. Allow the white chocolate to set completely.
5. Store cookies airtight at room temperature for up to 3 days.

[www.grandbaby-cakes.com](http://www.grandbaby-cakes.com)

## Historical happenings

### 1956-Almost complete!



Electric use took a surge forward and people adopted an “electric” lifestyle, complete with radios, televisions and refrigerators; electric appliances and gadgets found homes in Valley households. To meet the Valley’s growing demand for power, a second transmission line was completed in 1956. That line, a 115 kV line, reached the Valley via Poncha Pass. It is owned by Xcel Energy; agreements allow REC to use power from this line.

The photo, at left, was taken in 1956, shortly before construction was completed on the current REC building. At the time the cooperative had 26 employees and served 3,592 meters. Today, the cooperative employs 53 and serves just under 13,000 meters.



Periodical Postage  
Paid at Monte Vista, CO

---

## POWERING A VITAL VALLEY

P.O. Box 3625  
Monte Vista, CO 81144

March 2022

**Thank you  
SLVREC employees!**

**GREAT  
JOB!**

**EMPLOYEE  
APPRECIATION  
DAY  
MARCH 4, 2022**

**POWERING OUR COMMUNITY**



REC's office is open from 7 a.m. to 5 p.m. Monday through Thursday.

**ENERGY ASSISTANCE**  
866-HEAT HELP (866-432-8435)  
[www.energyoutreach.org](http://www.energyoutreach.org)

Your Touchstone Energy®  
Cooperative 

**SCHEDULED MEETINGS**

Board Meeting: Tuesday, March 29, 9:30 a.m.  
The REC Board of Directors meets the last Tuesday of each month unless otherwise stated. Members are welcome; advance notice required.

This institution is an equal opportunity employer.



Photo by Tyler Cerny